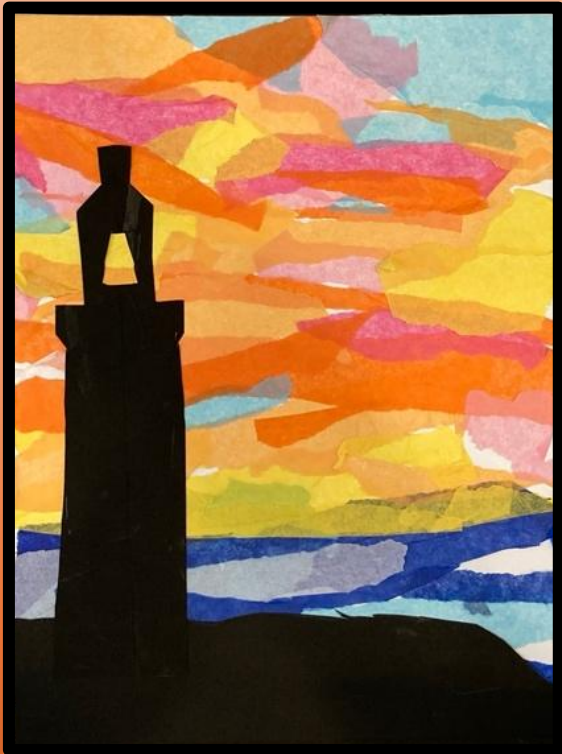


PV Lighthouse at Sunset

By Robin Kiss

March 2025



Lighthouses are beautiful in a plain sort of way.

Edward Hopper



Description and Objectives

1. Inspired by Edward Hopper's lighthouse paintings.
2. Visit the historic Point Vicente lighthouse.
3. Learn why the sky is so colorful during sunrise and sunset.
4. Make a collage with cut or torn paper shapes.
5. Demonstrate skill in use of tools and process: Such as use of scissors, glue, & paper.
6. Use placement, overlapping, and size differences.
7. Mix and apply layers to create tints, shades, and neutral colors.

Key Vocabulary

Color – Element of Art. The visual perception of color depends on the reflection or absorption of light spectrum from a given surface. The three characteristics of color are hue, value, and intensity.

Collage - An artistic composition made of various materials (e.g., paper, cloth, or wood) glued on a surface.

Horizon line - The visual boundary (eye level) where the sky and earth seem to meet.

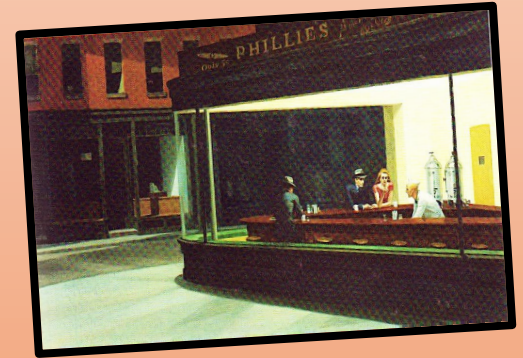
Organic - Refers to shapes or forms having irregular edges or to surfaces or objects resembling things existing in nature.

American Realism – 20th Century artistic movement characterized by subjects painted from everyday life in a naturalistic manner.

Inspiration: Lighthouse paintings of Edward Hopper



- Edward Hopper (1882-1967) generally considered the foremost realist painter of 20th-century America. He was famous for painting pictures that looked real.
- His artwork painted with realism reflected the loneliness of life in the modern city and rural America.
- He often sketched on location, drawing inspiration from his surroundings and the people he encountered.
- Hopper was born in upstate New York he always wanted to be a painter.
- Between 1906-1910, Hopper had little interest in Fauvism or Cubism. Instead, Degas' and Manet's compositions and images of urban life influenced his art.
- In later years he lived in the NYC where he maintained a studio.
- He spent summers in New England. Hopper used locations of Cape repeatedly in his art. He liked to paint lighthouses.



Point Vicente Lighthouse Against a Colorful Sky

Point Vicente Lighthouse

- Land purchased by government in 1923.
- Plans were required to pass the local Art Jury.
- Therefore, the PV Lighthouse is America's only operating lighthouse of Spanish or Mediterranean architecture.
- It is also the only lighthouse property that has palm trees.



Why Are Sunrise and Sunset So Colorful?

Rayleigh Scattering

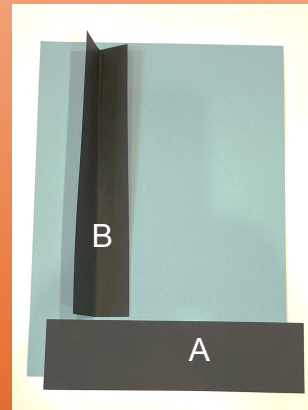
- During sunrise or sunset the sun is close to the horizon.
- Light travels through more of the atmosphere than it does when the sun is overhead.
- Results in more scattering of light which creates colorful sunrise and sunset skies.



Supplies and Set-up

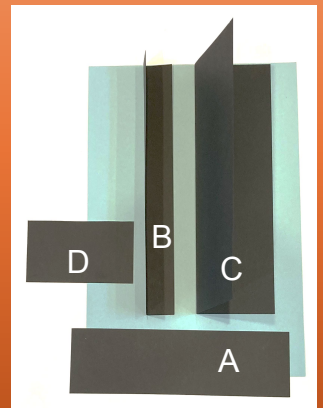
Grades TK-2

- Pencil or white pencil
- Practice Cutting worksheet
- One light blue cardstock
- Glue stick
- Scissors
- Black cardstock rectangles: Flat land (A) and folded lighthouse (B).
- Set of tissue paper shared by 2 students: 13 colors



Grades 3-5

- Pencil or white pencil
- One light blue cardstock
- Glue stick
- Scissors
- Black cardstock rectangle: Land (A), lighthouse (B), palm tree (C) and optional caretaker's house (D).
- Set of tissue paper, shared by 2 students. (Same as TK-2).



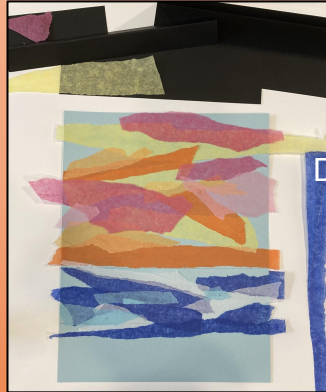
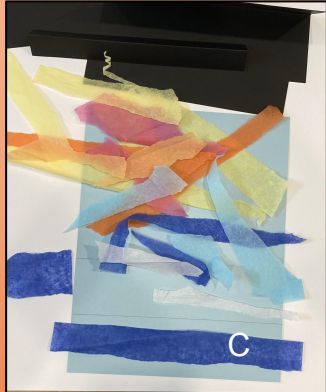
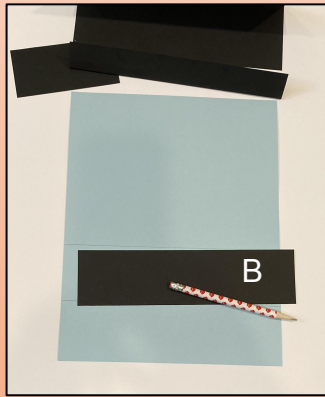
Procedure

Applying Tissue Paper (All Grades)

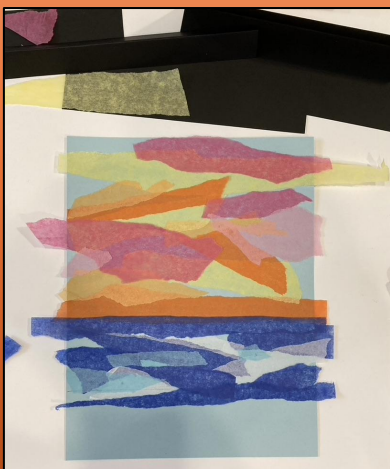
1. Use unfolded land rectangle to draw land (A) and horizon lines (B).
2. Tear all sides of strips of tissue paper, with exception of one dark blue:
 - Leave it the width of the cardstock with a straight edge to cover the horizon line (C).
 - Set straight edge strip aside to add after the sunset sky and ocean are completed (D).
3. Apply torn strips with glue to light blue cardstock, layering some thereby creating new values.
4. Make the ocean mostly dark blue with smaller pieces of white and lighter blue values.
5. Make the sky colorful.



1



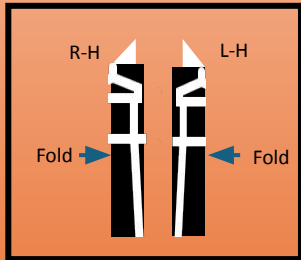
2



3

Drawing and Cutting Out the Lighthouse (All Grades)

1. If rectangles are not pre-folded have students fold the lighthouse rectangle in half vertically.
2. Draw half the lighthouse on folded paper according to the Drawing Guide.

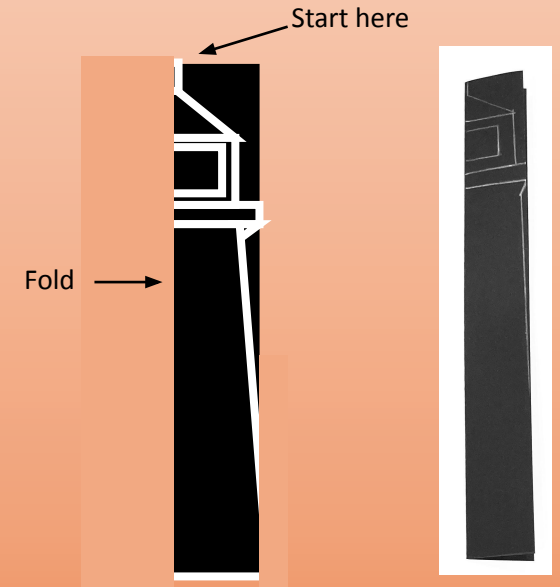


Right-handed students opening to the right and left-handed students opening to the left.

3. Hold the two sides together (with paperclip, if necessary) start cutting on the line from the bottom up.
4. Set aside for assembly.



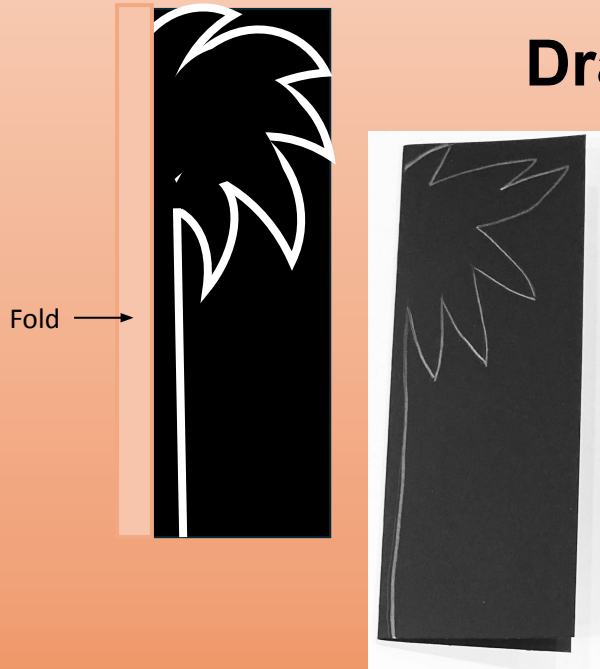
Procedure



For TK-2 have students first practice cutting with scissors on worksheet.

Procedure

Drawing and Cutting Out the Palm Tree: Grades 3-5



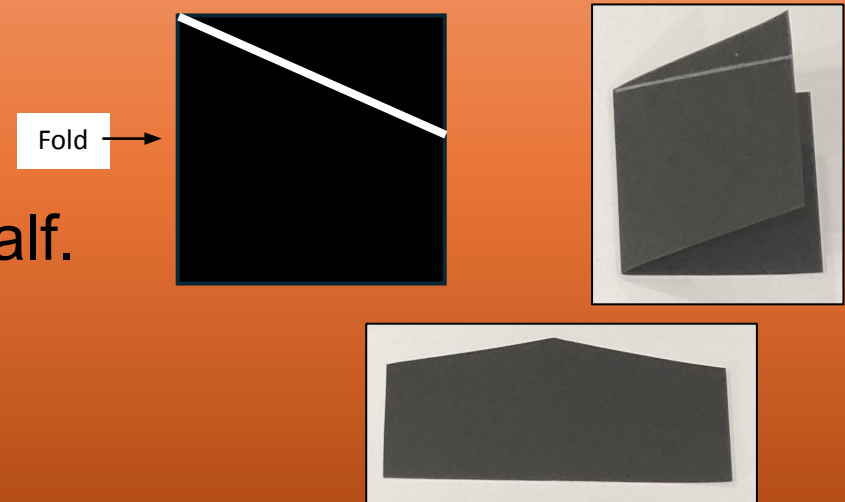
1. Draw outline of half the palm tree on folded paper according to Drawing Guide and cut out.
2. By folding the paper in half when the paper is opened, the leaves will be symmetrical.



3. Modify some leaves with the scissors to create a more natural looking palm tree.

Caretaker's House: Grades 3-5 (Optional)

1. Hold the house rectangle horizontal and fold in half.
2. Draw line as indicated on Drawing Guide.
3. Cut out the caretaker's house.

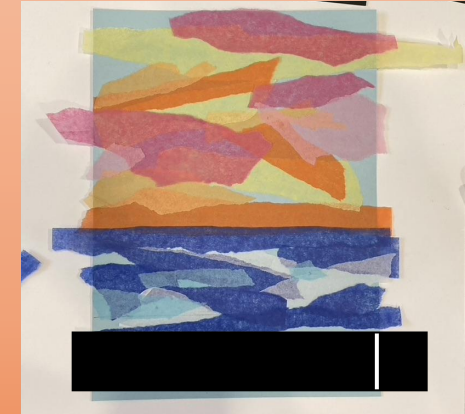


Land

Grades TK-2

Grades Tk-2 students have a different view of the cliff than grades 3-5 students. In their art, they see the edge of the cliff. The rectangle for the land is longer and needs to be trimmed to fit:

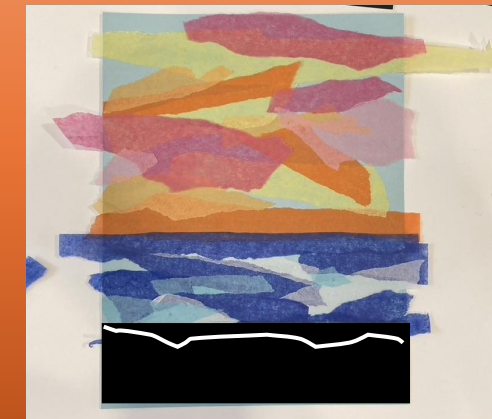
1. Put the land rectangle in place. Mark the rectangle where it meets the end of the cardstock.
2. Draw a line from the pencil mark down to show the new end of the rectangle.
3. Remove the rectangle. Moving left to right, draw a curvy horizontal line across the very top rounding when just reaching the newly marked end. (Drawing Guide: Land Grades TK-2).
4. Use the pencil line as a guide to cut out the cliff's edge.



Grades 3-5

Since older student's view includes the palm tree, the curved edge of the cliff is not seen:

1. Draw a horizontal line across the very top of the rectangle (Drawing Guide: Land Grades 3-5).
2. Use the pencil line as a guide to cut out the top of the cliff.



Procedure

Assemble (All Grades)

Check placement without gluing. Make sure there is room for all the pieces starting with the land. *When gluing, always apply glue to the pencil side.*

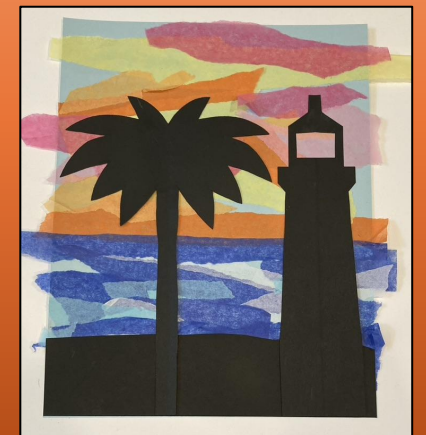
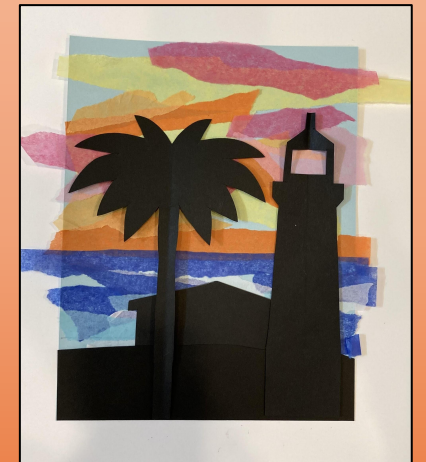
Grades TK-2

1. Glue land first.
2. Then glue lighthouse.



Grades 3-5

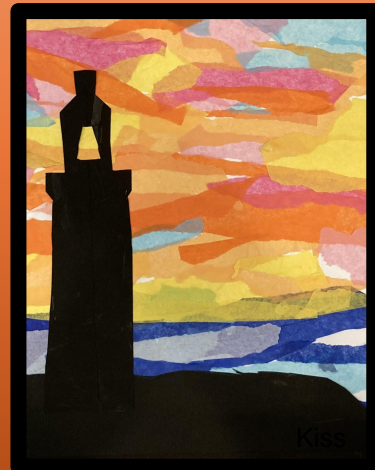
1. Apply land first.
2. Then glue lighthouse in place.
3. If adding the caretaker's house, glue it in place next to the lighthouse.
4. Glue the palm tree to the left of the lighthouse (in front of caretaker's house, if added).



Procedure

Assemble (All Grades)

1. Check tissue paper sunset for any unglued edges.
2. Turn art over and trim excess tissue with scissors.
3. Turn right-side-up and print name in lower right-hand corner of artwork (not boarder) with pencil.
4. Mount on black art paper. (If project label not affixed, add label).



If time permits, exhibit artwork by everyone holding their paintings up together. Look around the room and enjoy the sunset.